



## Compassion Scarf

*Here is an amazing reversible cable pattern that looks wonderful from either side. We suggest that you knit it in Perfect Pink to show support for breast cancer awareness.*

LW2776



INTERMEDIATE

Designed by Ann Regis.

Scarf measures 6½" x 63" excluding fringe.

RED HEART® Super Saver®: 1 skein 706 Perfect Pink.

Knitting Needles: 6mm [US 10].

Cable needle, yarn needle.

**GAUGE:** 14 sts = 4"; 18 rows = 4" in St st. **CHECK YOUR GAUGE. Use any size needles to obtain the gauge.**

### Special Abbreviations

**M1 (make one stitch)** = Lift running thread before next stitch onto left needle and knit into the back loop.

**C6B** = slip next 3 sts to cable needle and hold at back of work, k3, then k3 from cable needle.

**C6F** = slip next 3 sts to cable needle and hold at front of work, k3, then k3 from cable needle.

**C10B** = slip next 5 sts to cable needle and hold at back of work, k5, then k5 from cable needle.

**C10F** = slip next 5 sts to cable needle and hold at front of work, k5, then k5 from cable needle.

### SCARF

Cast on 31 sts.

**Foundation Row:** K1, \* p1, k1; repeat from \* across.

**Row 1 (Right Side):** K1, [p1, k1] twice, k9, k1, p1, k1, k9, k1, [p1, k1] twice.

**Row 2:** K1, [p1, k1] twice, p9, k1, p1, k1, p9, k1, [p1, k1] twice.

**Row 3:** K1, [p1, k1] twice, k3, C6B, k1, p1, k1, C6F, k3, k1, [p1, k1] twice.

**Rows 4 and 6:** K1, [p1, k1] twice, p9, k1, p1, k1, p9, k1, [p1, k1] twice.

**Row 5:** K1, [p1, k1] twice, C6B, k3, k1, p1, k1, k3, C6F, k1, [p1, k1] twice.

**Row 7:** K1, [p1, k1] twice, k9, k1, p1, k1, k9, k1, [p1, k1] twice.

**Row 8:** Repeat Row 4.

**Rows 9-16:** Repeat Rows 7 and 8.

**Row 17:** K1, [p1, k1] twice, C6F, k3, k1, p1, k1, k3, C6B, k1, [p1, k1] twice.

**Rows 18 and 20:** Repeat Row 4.

**Row 19:** K1, [p1, k1] twice, k3, C6F, k1, p1, k1, C6B, k3, k1, [p1, k1] twice.

**Rows 21-30:** Repeat Rows 7 and 8.

**Rows 31-34:** Repeat Rows 3-6.

**Row 35:** K1, p1, C6B, k6, k1, p1, k1, k6, C6F, p1, k1.

**Rows 36 and 38:** K1, p1, p12, k1, p1, k1, p12, p1, k1.

**Row 37:** K1, p1, k12, k1, p1, k1, k12, p1, k1.

**Rows 39-46:** Repeat Rows 37 and 38.

**Row 47:** K1, p1, slip next 3 sts to cable needle and hold at front of work, k1, p1, k1, then k3 from cable needle, k6, k1, p1, k1, k6, slip next 3 sts to cable needle and hold at back of work, k3, then k1, p1, k1 from cable needle, p1, k1.

**Rows 48, 50, and 52:** K1, [p1, k1] twice, p9, k1, p1, k1, p9, k1, [p1, k1] twice.

**Row 49:** K1, [p1, k1] twice, k3, C6F, k1, p1, k1, C6B, k3, k1, [p1, k1] twice.

**Row 51:** K1, [p1, k1] twice, C6F, k3, k1, p1, k1, k3, C6B, k1, [p1, k1] twice.

**Row 53:** K1, [p1, k1] twice, k9, k1, p1, k1, k9, k1, [p1, k1] twice.





**Row 54:** Repeat Row 48.

**Rows 55-62:** Repeat Rows 53 and 54.

Repeat Rows 3-62 twice more and then repeat Rows 3-30 once more increasing 1 st in each “k9” section on next-to-last row – 33 sts. Scarf should measure about 30” from beginning. Now work second cable pattern.

**Row 1:** K1, [p1, k1] twice, C10F, k1, p1, k1, C10B, k1, [p1, k1] twice.

**Row 2:** K1, [p1, k1] twice, p10, k1, p1, k1, p10, k1, [p1, k1] twice.

**Row 3:** K1, [p1, k1] twice, k10, k1, p1, k1, k10, k1, [p1, k1] twice.

**Row 4:** Repeat Row 2.

**Rows 5-14:** Repeat Rows 3 and 4.

Repeat Rows 1-14 thirteen more times, then repeat Row 1 again.

**Next Row:** K1, \* p1, k1; repeat from \* across.

Bind off in Seed st pattern decreasing 2 sts across each cable by working “k2tog, then p2tog”.



#### Fringe

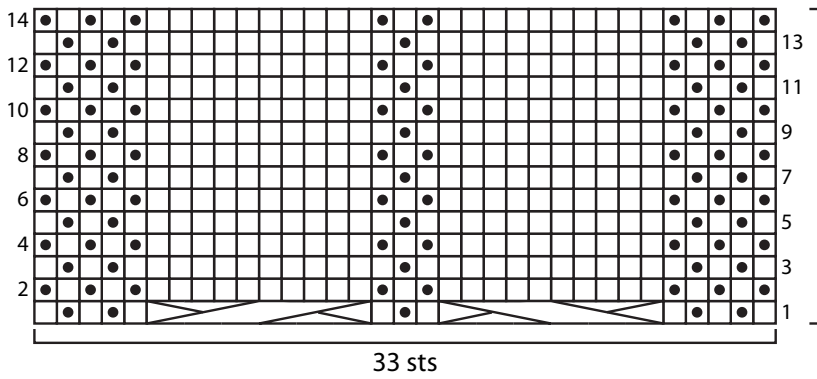
Cut 10” strands of yarn. Holding 5 strands together, knot 3 fringes at each corner as shown. Trim yarn ends.



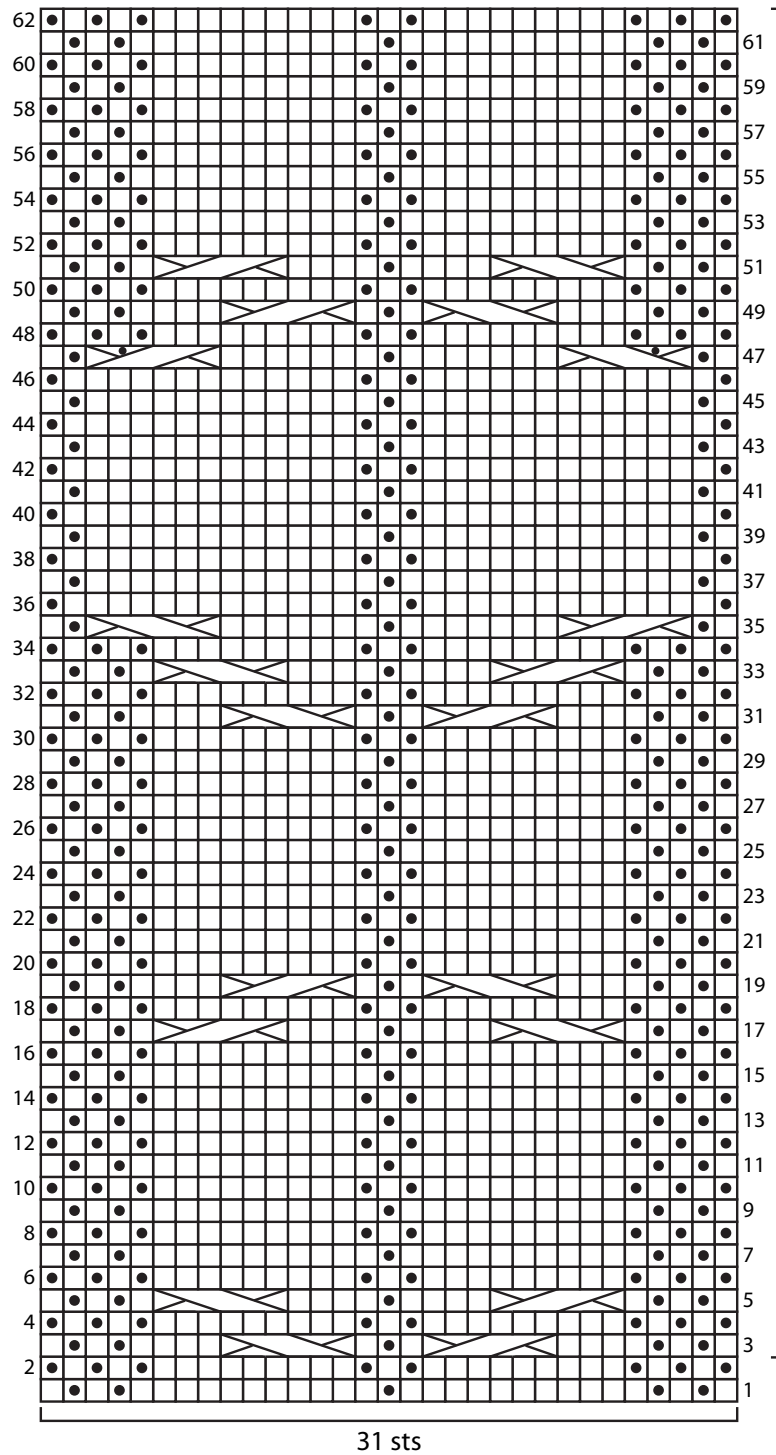
**RED HEART® Super Saver®**, Art. E300 available in solid color 7 oz (198 g), 364 yd (333 m); multi color, heather and print 5 oz (141 g), 244 yd (223 m), flecks 5 oz (141 g), 260 yd (238 m) skeins.

**ABBREVIATIONS:** **K** = knit; **mm** = millimeters; **P** = purl; **St st** = Stockinette stitch (Knit on right side rows; Purl on wrong side rows.); **st(s)** = stitch(es); **tog** = together; **[ ]** = work directions in brackets the number of times specified.


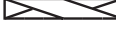








14-row  
repeat  
(work a total  
of 14 times, then  
repeat Row 1  
once more)



60-row  
repeat  
(work a total  
of 3 times, then  
repeat Rows 3-30  
once more)

- k on RS, p on WS
- p on RS, k on WS
-  C6B
-  C6F
-  C10B
-  C10F
-  Slip 3 sts to cable needle and hold at back of work, k3, then k1, p1, k1 from cable needle
-  Slip 3 sts to cable needle and hold at front of work, k1, p1, k1, then k3 from cable needle